

It's All About Your Data

SuperSwap™ I600 Drive Enclosure

SuperSwap™ I600



I-Bay Internal Hot-Swappable SAS/SATA 3Gb/s Drive Enclosure

Promise SuperSwap I600 is an internal hot-swappable drive enclosure that supports one SAS/SATA 3Gb/s or SATA/SATA II 1.5Gb/s drive. Occupying one 5.25" bay space, it supports both 3.5" and 2.5" disk drives to fulfill customer needs. With intelligent enclosure design and management functions, Promise continues to deliver the most advanced enclosure solution to the market.

Flexible Disk Drive Support

SuperSwap I600 supports SAS/SATA data transfer rates of up to 3Gb/s and is also backwards compatible with SATA/SATA II 1.5Gb/s disk drives.* It occupies one 5.25" bay space in a desktop or tower server system. In addition to 3.5" disk drives, SuperSwap I600 also supports 2.5" form factor (optional accessory kit) thereby giving customers the ultimate storage enclosure designed for their needs.

Intelligent Enclosure Management

Enclosure management is provided via user friendly web-based utility WebPAM, the same management tool that is packaged with Promise RAID controllers. Important status such as array status, fan speed, temperature and power monitor are alerted with WebPAM. LED signalling for disk status and activity are easy to interpret and allows the user to be quickly alerted in case of a disk failure. SuperSwap I600 is designed to auto-configure ID number for I2C enclosure monitoring interface. Lastly, a security key is provided with each SuperSwap I600 to prevent unauthorized removal of drive.

Superior Enclosure Design

Cable-less drive carrier is firmly secured to the enclosure housing via a backplane. Ventilation to the drive is provided via a fan that discharges the hot air out of the enclosure. Eight SuperSwap I600s may be daisy-chained to configure an 8-drive system.

Assured Compatibility, Reliability and Quality

SuperSwap I600 has been rigorously tested throughout the design phase with Promise RAID controllers to provide optimum compatibility. It offers the dependability and reliability that is required by the storage industry. SuperSwap I600 is fully RoHS compliant and is backed by Promise's 3 year warranty and expert technical support.

Proven Enclosure Design

SuperSwap I600 continues the Promise tradition of providing cost-effective server-class technology for the market. From SuperSwap I000, the first hot-swappable storage enclosure for ATA drives to the new SuperSwap I600 that supports SAS/SATA drives, Promise continues to provide products with the latest technology and innovation with flexibility in usage that puts the customer in the driver seat. With SuperSwap I600, you are in control.



Available in charcoal and beige

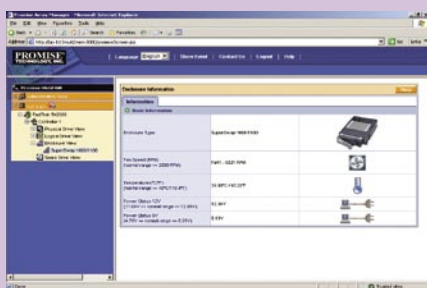
SuperSwap™ I600

- :: Supports one SAS/SATA disk drive
- :: SAS/SATA 3Gb/s, SATA/SATA II 1.5Gb/s drive compliant*
- :: 3.5" and 2.5" form factor support
- :: Up to 8 SuperSwap I600s may be daisy-chained
- :: Compatible with Promise RAID controllers
- :: Standard lock for added security
- :: Advanced enclosure management via WebPAM
- :: 3 years warranty





Intelligent Management Interface



Web-based Promise Array Management (WebPAM) software is a powerful management tool that is straight forward and simple-to-use. Array configuration, management and monitoring features such as disk and array status, fan speed, temperature and power monitor are available via WebPAM and can be alerted by e-mail according to user preference.

The Leader in SATA RAID

Promise Technology is the originator of ATA RAID and worldwide leader in SATA RAID with over 14 million controllers shipped. Using Serial ATA and SCSI (SAS) technology to design and manufacture fast, reliable cost-effective data protection, Promise is the preferred choice for SATA host bus adapters, RAID controllers and SAS/SATA external storage systems.

www.promise.com

Specifications

Controller Support

- Promise RAID controllers

Drive Support

- SAS/SATA 3Gb/s, SATA/SATA II 1.5Gb/s

Hot Swappable

- Easy removal of drives without system shut-down

Drive Cabling

- Works with SAS/SATA cabling to support data transfers up to 3Gb/s
- Cables are provided with Promise controllers.

Power Cabling

- Enclosure is powered using standard 4-pin power connector

Physical Requirements

- One available 5.25" bay per housing

Security Features

- Locking mechanism prevents unauthorized removal of drive

Multiple SuperSwap

- Up to 8 SuperSwap 1600 may be daisy-chained for an 8-drive system

Physical Dimension

- 8.25" (L) x 5.75" (W) x 1.65" (H)

Package Content

- Removable drive chassis
- Internal drive housing
- 3-pin to 3-pin SMBus cable
- 6-pin daisy-chain cable
- Screws for mounting HDD and Chassis
- Quick Start Guide and Product CD

Optional Accessory

- 2.5" drive conversion kit. Kit p/n: F29SS1620000000

Warranty 3 Years

* Some SATA GenI drives may not be compatible due to disk drive mechanical design. Please refer to User Manual for detailed information.
©2006 Promise Technology, Inc. Specifications subject to change without notice.

As of 08/06

Promise USA

Milpitas, CA
Tel: 1-408-228-1400
E-mail: sales@promise.com

Promise China

Beijing, China
Tel: 86-10-8857-8085 or 8095
E-mail: sales-china@promise.com

Promise Japan

Tokyo, Japan
Tel: 81-03-5823-1021
E-mail: sales-jp@promise.com.tw

Promise Taiwan

Hsin-Chu, Taiwan
Tel: 886-3-578-2395
E-mail: sales@promise.com.tw

Promise EMEA

Son, The Netherlands
Tel: 31-408-235-2600
E-mail: sales@promise-emea.com

Promise Germany

Dortmund, Germany
Tel: 49-02-31-56-76-48-0
E-mail: sales-de@promise-emea.com

Promise Italy

Rome, Italy
Tel: 0039-06-3671-2626
E-mail: sales-it@promise-emea.com

Promise UK

Wokingham, United Kingdom
Tel: 44-0-870-112-59-77
E-mail: sales@promise-emea.com